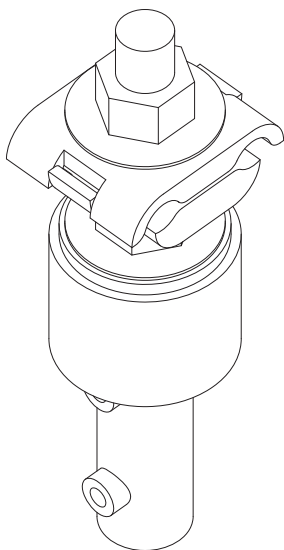


## THRU-WALL OR THRU-ROOF CABLE CONNECTORS



Combination connector for thru-wall or thru-roof cable penetration — draws tight to top and bottom of PVC cap to be installed on PVC conduit stubbed through the wall or up through the roof. A neoprene washer is provided to draw tight to top of PVC cap and provides a moisture seal. Cable clamp No. 55D or No. A55D, lug No. 55B or No. A55B, or tee connector No. 42AN or No. A42AN furnished for the top end — straight connector 42 for bottom end to be concealed in 1" PVC — straight connector 42L or A42L for bottom end to be concealed in 1-1/4" PVC. For copper-to-copper connection, all components are copper or bronze except nuts and washers which are stainless steel — for copper-to-aluminum or aluminum-to-aluminum connection, the threaded rod, nuts and washers are stainless steel — threaded rod 1/2" diameter. Overall dimensions - 1.930" x 5.25".



### For 1" PVC Conduit

**Cat. No. 747CDCS** — Copper Clamp to Copper Straight Connector - 14.8 oz.

**Cat. No. 747ADCS** — Aluminum Clamp to Copper Straight Connector - 11.6 oz.

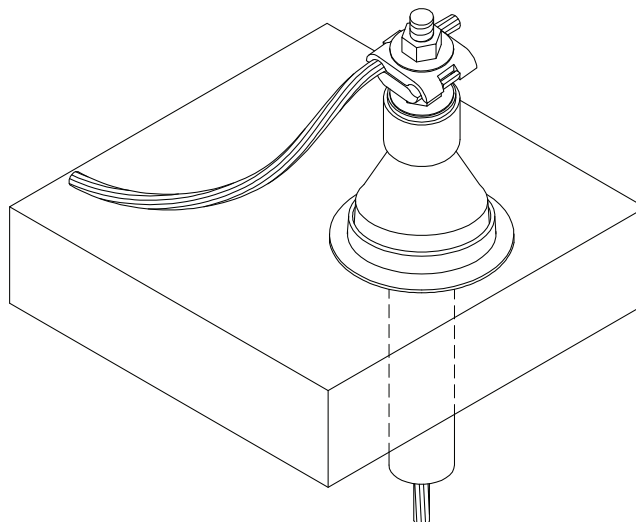
**Cat. No. 747ADAS** — Aluminum Clamp to Aluminum Straight Connector - 9.2 oz.

### For 1-1/4" PVC Conduit

**Cat. No. 748CDCS** — Copper Clamp to Copper Straight Connector - 15 oz.

**Cat. No. 748ADCS** — Aluminum Clamp to Copper Straight Connector - 11.8 oz.

**Cat. No. 748ADAS** — Aluminum Clamp to Aluminum Straight Connector - 9.4 oz.



# ROBBINS LIGHTNING, INC.

124 EAST SECOND STREET PHONE (660) 582-3156 FAX (660) 582-3039 P.O. BOX 440 MARYVILLE, MISSOURI 64468-0440

