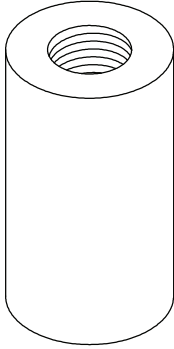


## MISCELLANEOUS STACK EQUIPMENT

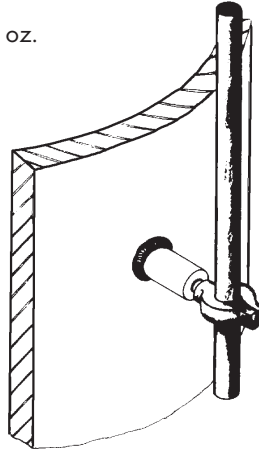
### WELDING STUD

Stainless steel female stud for welding to steel stacks to receive threaded bronze cable and point holders – length of stud 1-1/4", diameter 5/8" – with 3/8" threads for holders.

Cat. No. 468-3 – 3/8" thread - 2.4 oz.



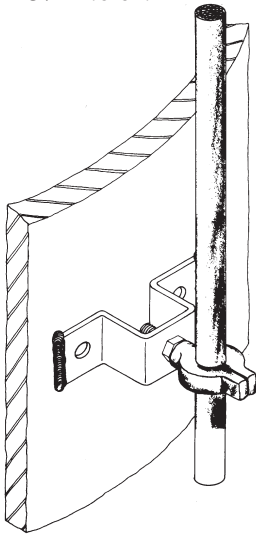
Typical use on  
steel surface



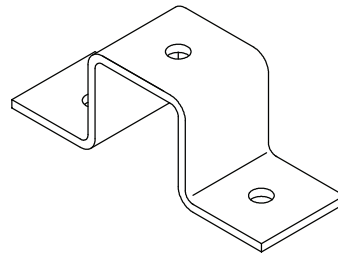
### WELDING BRACKET

Stainless steel bracket for welding to steel stacks to support bronze cable and point holders – may be bolted to steel surface with two 3/8" screws – stand-off distance 1-1/2", welding ears 1" wide – made of 1/8" x 1" stainless steel stock – hole to receive 3/8" stem on holder of metal mount series.

Cat. No. 469 - 2.6 oz.



Typical use on  
metal surface



# ROBBINS LIGHTNING, INC.

124 EAST SECOND STREET PHONE (660) 582-3156 FAX (660) 582-3039 P.O. BOX 440 MARYVILLE, MISSOURI 64468-0440

-139-

