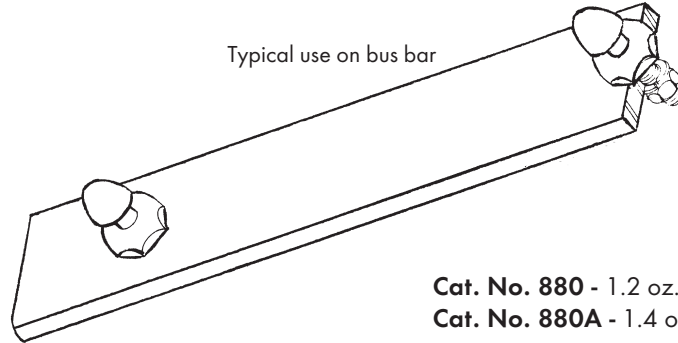
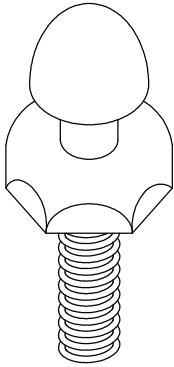


BUS BAR ACCESSORIES

GROUNDING STUD

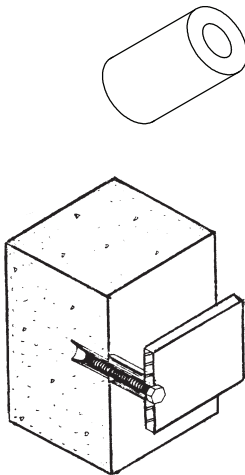
Machined brass stud for use in static ground receptacle or as grounding point on copper bus bar – standard 1/2" knob for spring clip or battery type clip – threaded 5/16" NC – furnished plain as shown (No. 880) or with 5/16" nut and lock washer (No. 880A).



Cat. No. 880 - 1.2 oz.
Cat. No. 880A - 1.4 oz.

FIBER SPACER

Bus bar spacer of impact resistant, non-conductive fiber – for use in holding bar away from wall to allow clamping or bolting of lugs and terminals to bar – 3/8" ID and 3/4" OD – for use on bus bar to 1-1/2" wide – maximum stand-off 2" recommended.

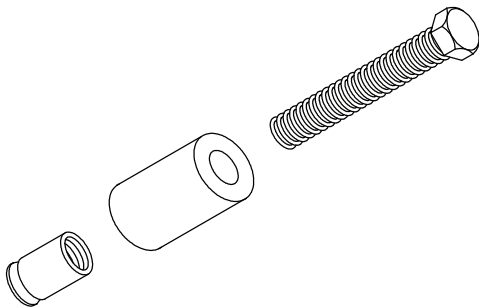


Typical use as
bus bar spacer

Cat. No. 617 – 1/2" long - 0.1 oz.
Cat. No. 617A – 3/4" long - 0.15 oz.
Cat. No. 617B – 1" long - 0.21 oz.
Cat. No. 617C – 1-1/2" long - 0.3 oz.
Cat. No. 617D – 2" long - 0.4 oz.

ANCHOR SPACER ASSEMBLY

Assembly for mounting bus bar consists of No. 617 series fiber spacer, No. 86 lead anchor and proper length of 1/4" diameter screw.



Cat. No. 618 – 1/2" spacer, 1-1/4" screw - 0.87 oz.
Cat. No. 618A – 3/4" spacer, 1-1/2" screw - 0.97 oz.
Cat. No. 618B – 1" spacer, 1-3/4" screw - 1.1 oz.
Cat. No. 618C – 1-1/2" spacer, 2-1/4" screw - 1.3 oz.
Cat. No. 618D – 2" spacer, 2-3/4" screw - 1.5 oz.

ROBBINS LIGHTNING, INC.

124 EAST SECOND STREET PHONE (660) 582-3156 FAX (660) 582-3039 P.O. BOX 440 MARYVILLE, MISSOURI 64468-0440

