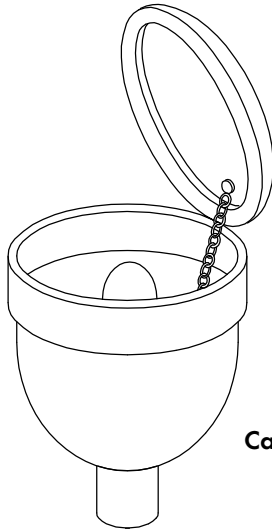
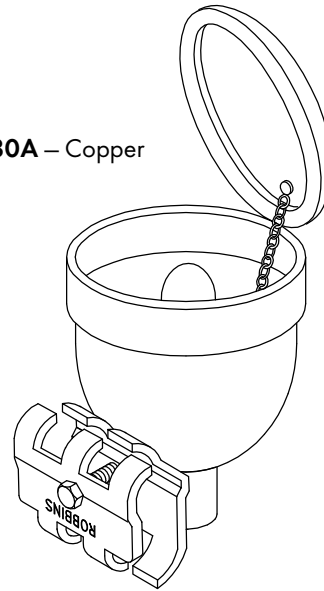


STATIC GROUNDING RECEPTACLES (Aircraft Type)



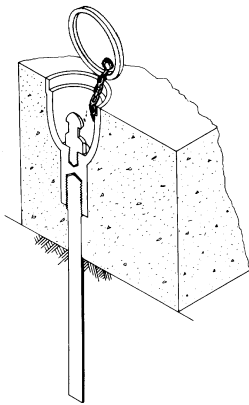
Cat. No. 680 – Copper

Cast Bronze Aircraft Type Static Grounding Receptacle. Cover attached with strong linked chain. Replaceable stud for standard 1/2" grounding connector. Base threaded to receive 3/4" sectional ground rod or extension rod. Dimensions: 2-15/16" wide and 3-1/4" deep.

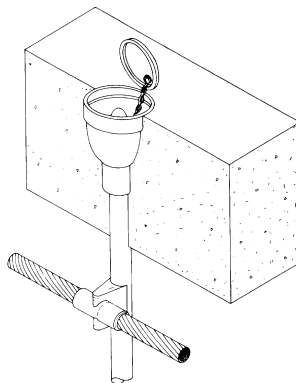


Cat. No. 680A – Copper

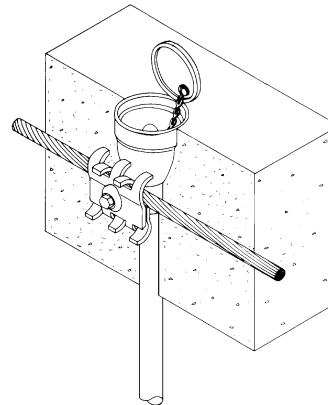
Same as No. 680 described at left except cable connector No. 68A added. Cable capacity No. 6 AWG through No. 250 MCM AWG. Dimensions: 2-15/16" wide and 3-1/4" deep.



Typical use with ground rod only



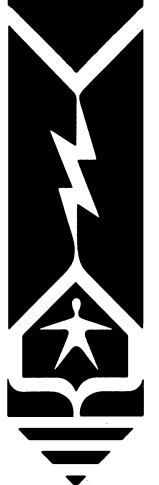
Typical use with welded connection to cable in slab



Typical use with clamped connection to cable in slab

ROBBINS LIGHTNING, INC.

124 EAST SECOND STREET PHONE (660) 582-3156 FAX (660) 582-3039 P.O. BOX 440 MARYVILLE, MISSOURI 64468-0440



STATIC GROUNDING RECEPTACLES AND EXTENSION RODS

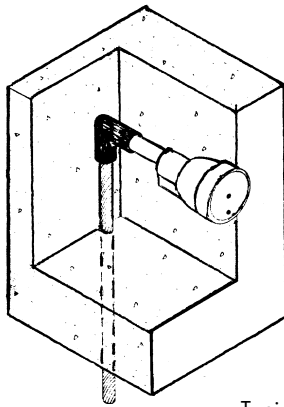


1/2 actual size

Cast bronze aircraft type static grounding receptacle for use on vertical masonry wall. Cover attached with strong linked chain and spring clip to retain lid. Replaceable stud for standard 1/2" grounding connector – base threaded to receive 3/4" sectional ground rod or extension rod.

Dimensions: 2-15/16" wide and 3-1/4" deep.

Cat. No. 680B – Copper



Typical use on vertical wall

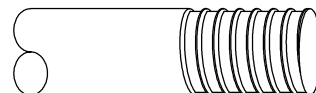
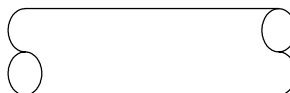
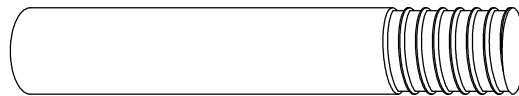
NOTE: Larger diameter receptacle available on special order. **Cat. No. 681** – bronze receptacle 4-1/2" diameter and 3-1/2" deep with standard stud, threaded hub 3/4".

Copperclad steel extension rods to assist in positioning receptacles at correct height when pouring concrete or for cable attachment – each rod threaded 3/4" to fit receptacle hub.

Cat. No. 897 – Copper – 4" long

Cat. No. 897A – Copper – 24" long

Cat. No. 897B – Copper – 36" long



ROBBINS LIGHTNING, INC.

124 EAST SECOND STREET PHONE (660) 582-3156 FAX (660) 582-3039 P.O. BOX 440 MARYVILLE, MISSOURI 64468-0440

