

THRU-ROOF AND THRU-WALL ASSEMBLIES

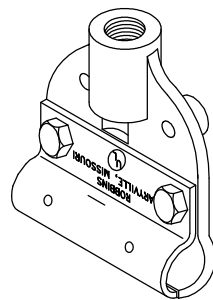


The following pages show various thru-roof and thru-wall assemblies using threaded rods, nuts, and washers, along with a combination of connectors as described below and as indicated by the letters added to the part number. (For complete description of the connectors listed, refer to index for catalog page on each item being considered).

"CP" means copper base center nut No. 803
(specify 3/8", 1/2", or 5/8" threads for point)



"AP" means aluminum base center nut No. A803
(specify 1/2" or 5/8" threads for point)

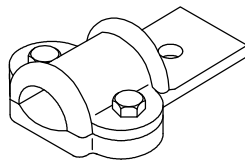
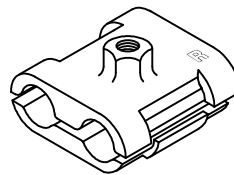


"CT" means copper tee base No. 42A

"AT" means aluminum tee base No. A42A

"CD" means copper clamp No. 55D

"AD" means aluminum clamp No. A55D



"CL" means copper lug No. 55B

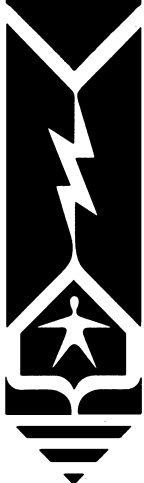
"AL" means aluminum lug No. A55B

"CS" means copper straight connector No. 42 or No. 42L
(specify size of cable being used)

"AS" means aluminum straight connector No. A42L



Shown - Two holes for mounting



ROBBINS LIGHTNING, INC.

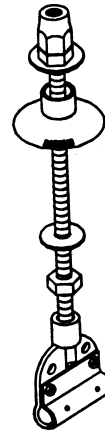
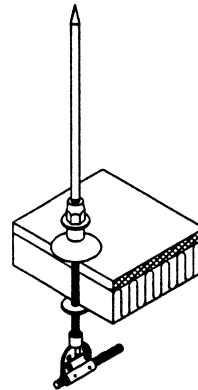
124 EAST SECOND STREET PHONE (660) 582-3156 FAX (660) 582-3039 P.O. BOX 440 MARYVILLE, MISSOURI 64468-0440

THRU-ROOF POINT ADAPTERS

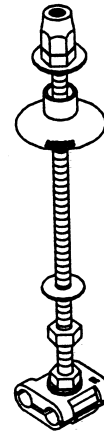
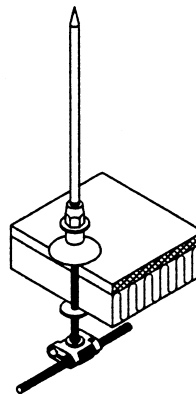


Combination connector used for thru-roof air terminal penetration – draws tight to top and bottom of composition or metal roof surfaces. Point adapter nut No. 803 or No. A803 at top along with cast bronze or aluminum flashing cone No. 100 or No. A100 to provide moisture seal. Your choice of No. 42A or No. A42A tee connector or No. 55D or No. A55D clamp for bottom end (either fits all main cables through 9/16" diameter). For copper-to-copper connection, all components are copper or bronze except nuts and washers which are stainless steel – for copper-to-aluminum or aluminum-to-aluminum connection, the threaded rod, nuts and washers are stainless steel. Threaded rod 1/2" diameter, standard length 12" – other lengths available upon request.

- Cat. No. 742CPCT** – Copper Point to Copper Tee Connector
- Cat. No. 742APCT** – Aluminum Point to Copper Tee Connector
- Cat. No. A742APAT** – Aluminum Point to Aluminum Tee Connector



- Cat. No. 742CPCD** – Copper Point to Copper Clamp
- Cat. No. 742APCD** – Aluminum Point to Copper Clamp
- Cat. No. A742APAD** – Aluminum Point to Aluminum Clamp

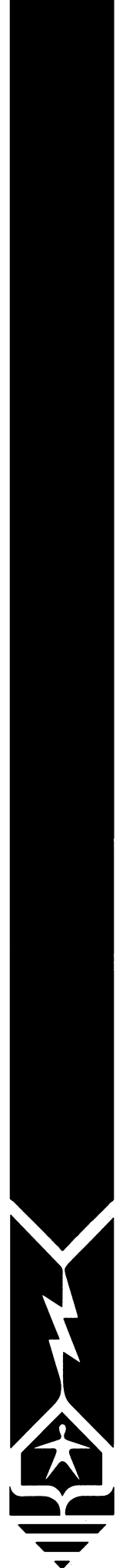


Other combination of parts can be made as needed.

Refer to connectors and letter codes as show on page 56.

ROBBINS LIGHTNING, INC.

124 EAST SECOND STREET PHONE (660) 582-3156 FAX (660) 582-3039 P.O. BOX 440 MARYVILLE, MISSOURI 64468-0440

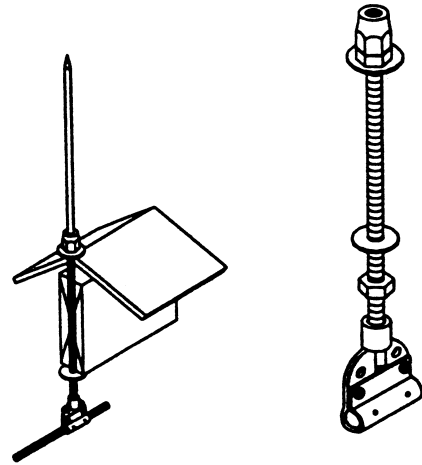


THRU-ROOF POINT ADAPTERS

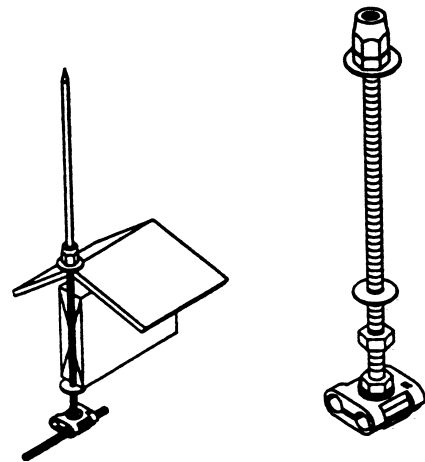


Combination connector used for thru-roof air terminal penetration – draws tight to top and bottom of composition or metal roof surfaces. Point adapter nut No. 803 or No. A803 at top. Your choice of No. 42A or No. A42A tee connector or No. 55D or No. A55D clamp for bottom end (either fits all main cables through 9/16" diameter). For copper-to-copper connection, all components are copper or bronze except nuts and washers which are stainless steel – for copper-to-aluminum or aluminum-to-aluminum connection, the threaded rod, nuts and washers are stainless steel. Threaded rod 1/2" diameter, standard length 12" – other lengths available upon request.

- Cat. No. 745CPCT** – Copper Point to Copper Tee Connector
- Cat. No. 745APCT** – Aluminum Point to Copper Tee Connector
- Cat. No. A745APAT** – Aluminum Point to Aluminum Tee Connector



- Cat. No. 745CPCD** – Copper Point to Copper Clamp
- Cat. No. 745APCD** – Aluminum Point to Copper Clamp
- Cat. No. A745APAD** – Aluminum Point to Aluminum Clamp

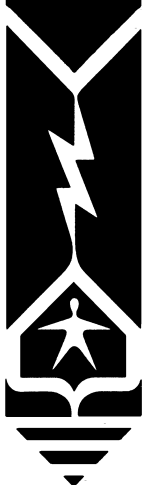


Other combinations of parts can be made as needed.

Refer to connectors and letter codes as shown on page 56.

ROBBINS LIGHTNING, INC.

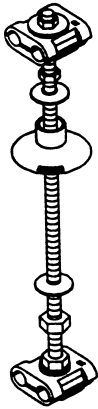
124 EAST SECOND STREET PHONE (660) 582-3156 FAX (660) 582-3039 P.O. BOX 440 MARYVILLE, MISSOURI 64468-0440



THRU-ROOF CABLE CONNECTORS



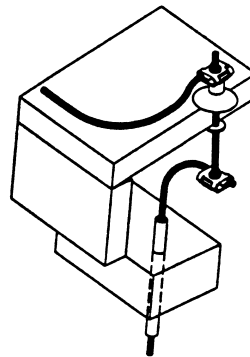
Combination connector for thru-roof cable penetration – draws tight to top and bottom of composition or metal roof surface. Cast bronze or aluminum flashing cone to provide moisture seal. Cable clamp No. 55D or No. A55D, lug No. 55B or No. A55B, or tee connector No. 42A or No. A42A furnished for either end (any of these connectors fit cables through 9/16" diameter). For copper-to-copper connection, all components are copper or bronze except nuts and washer which are stainless steel – for copper-to-aluminum or aluminum-to-aluminum connection, the threaded rod, nuts and washers are stainless steel. Threaded rod 1/2" diameter, standard length 12" – other lengths available upon request.



Cat. No. 743CDCD – Copper Clamp to Copper Clamp

Cat. No. 743ADCD – Aluminum Clamp to Copper Clamp

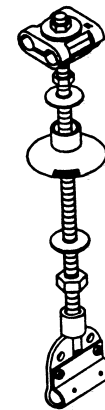
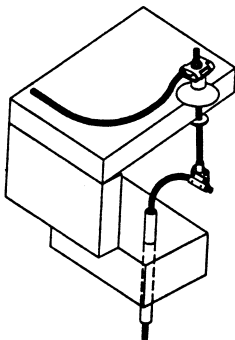
Cat. No. A743ADAD – Aluminum Clamp to Aluminum Clamp



Cat. No. 743CDCT – Copper Clamp to Copper Tee Connector

Cat. No. 743ADCT – Aluminum Clamp to Copper Tee Connector

Cat. No. A743ADAT – Aluminum Clamp to Aluminum Tee Connector

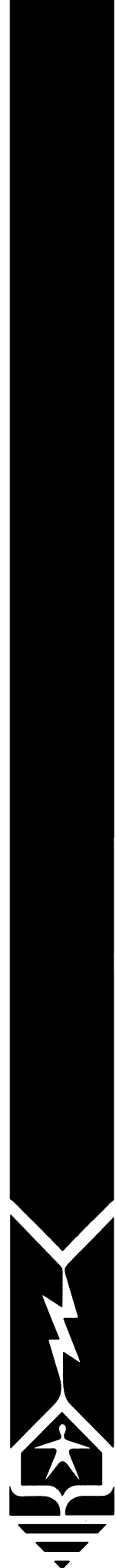


Other combination of parts can be made as needed.

Refer to connectors and letter codes as show on page 56.

ROBBINS LIGHTNING, INC.

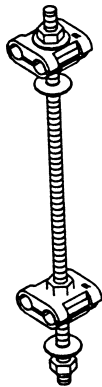
124 EAST SECOND STREET PHONE (660) 582-3156 FAX (660) 582-3039 P.O. BOX 440 MARYVILLE, MISSOURI 64468-0440



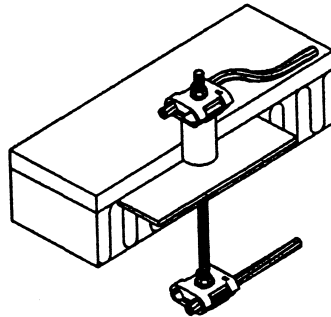
THRU-WALL OR THRU-ROOF CABLE CONNECTORS



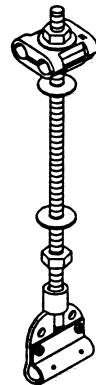
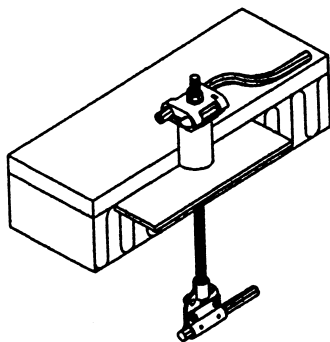
Combination connector for thru-wall or thru-roof penetration giving rigid attachment on both surfaces – assemblies may be used in masonry construction with one end concealed. Cable clamp No. 55D or No. A55D, lug No. 55B or No. A55B, or tee connector No. 42A or No. A42A furnished for either end (any of these connectors fit cables through 9/16" diameter). For copper-to-copper connection, all components are copper or bronze except nuts and washers which are stainless steel – for copper-to-aluminum or aluminum-to-aluminum connection, the threaded rod, nuts and washers are stainless steel. Threaded rod 1/2" diameter, standard length 12" – other lengths available upon request.



- Cat. No. 744CDCD – Copper Clamp to Copper Clamp
- Cat. No. 744ADCD – Aluminum Clamp to Copper Clamp
- Cat. No. A744ADAD – Aluminum Clamp to Aluminum Clamp



- Cat. No. 744CDCT – Copper Clamp to Copper Tee Connector
- Cat. No. 744ADCT – Aluminum Clamp to Copper Tee Connector
- Cat. No. A744ADAT – Aluminum Clamp to Aluminum Tee Connector

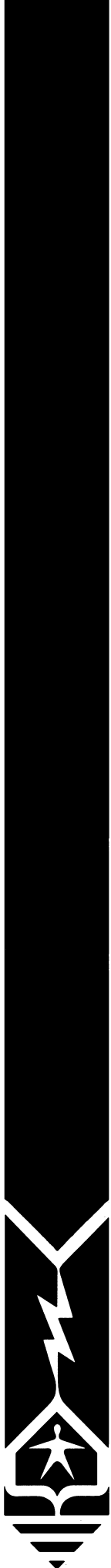


Other combination of parts can be made as needed.

Refer to connectors and letter codes as show on page 56.

ROBBINS LIGHTNING, INC.

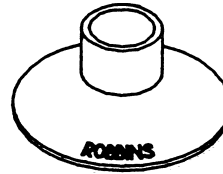
124 EAST SECOND STREET PHONE (660) 582-3156 FAX (660) 582-3039 P.O. BOX 440 MARYVILLE, MISSOURI 64468-0440



FLASHING CONE

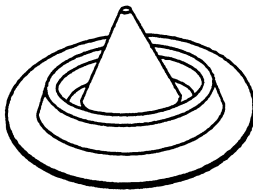
Heavy cast bronze or aluminum flashing cone for use on thru-roof penetrations to provide moisture seal.

Cat. No. 100 – Copper
Cat. No. A100 – Aluminum



FLASHING BOOTS

Flashing boots made of long life, flexible, weatherproof gray EPDM rubber. Corrosion-resistant aluminum base with pleated cone conforms to any roof pitch or configuration.

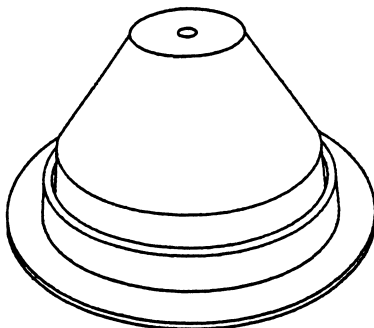
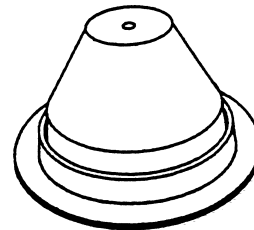


1-3/4" high, 3-1/2" base diameter, for use with No. 34 or No. A34 concealed point assemblies.

Cat. No. 1910

3" high, 4-3/4" base diameter, for use with assemblies using No. 100 or No. A100 flashing cones.

Cat. No. 3910

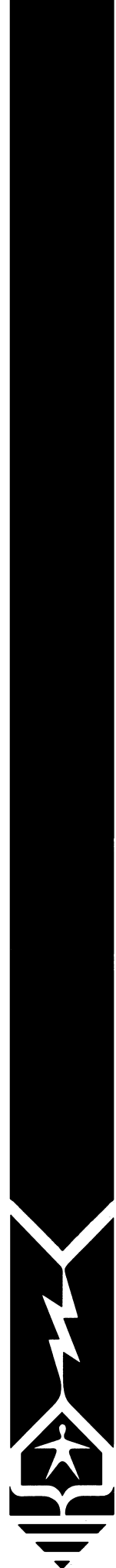


4" high, 7-3/4" base diameter, for use with assemblies using No. 684T or No. 684CT tubular pitch pans.

Cat. No. 9910

ROBBINS LIGHTNING, INC.

124 EAST SECOND STREET PHONE (660) 582-3156 FAX (660) 582-3039 P.O. BOX 440 MARYVILLE, MISSOURI 64468-0440



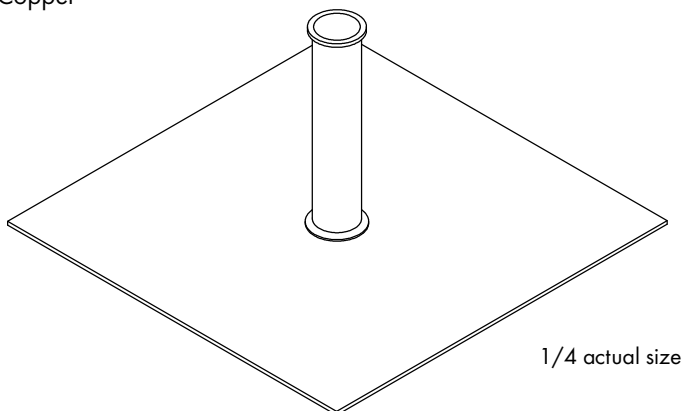
PITCH PANS OR PITCH POCKETS

TUBULAR PITCH PAN

Tubular type pitch pan of galvanized steel or copper – for use with thru-roof cable or rod assemblies – tubular section 3/4" ID for all cables through No. 605 and rods through 5/8" diameter – tube 4" high soldered to 8" square plate. Other sizes available on request.

Cat. No. 684T – Galvanized Steel

Cat. No. 684CT – Copper



1/4 actual size

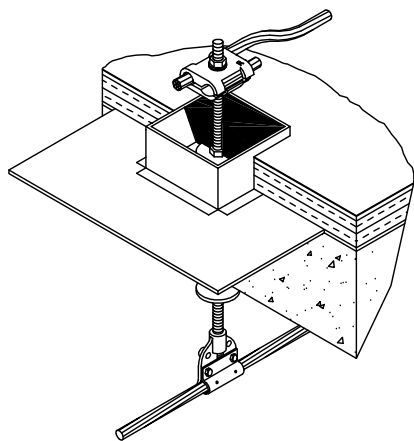
BOX TYPE PITCH PAN

Box type pitch pan of galvanized steel, copper or aluminum – for use on cable, rod or conduit roof penetration – box section 2" high, 4" square, riveted to 12" square base plate – hole in base 9/16" diameter, but may be cut larger or conduits – after penetration complete, fill with roofing pitch.

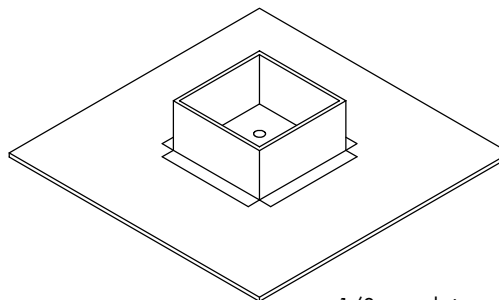
Cat. No. 684 – Galvanized Steel

Cat. No. 684C – Copper

Cat. No. A684 – Aluminum



Typical use as part of thru-roof assembly



1/8 actual size

Cat. No. 684PVC – Tubular PVC Pitch Pan (not shown). Various sizes available on request.

ROBBINS LIGHTNING, INC.

124 EAST SECOND STREET PHONE (660) 582-3156 FAX (660) 582-3039 P.O. BOX 440 MARYVILLE, MISSOURI 64468-0440

